

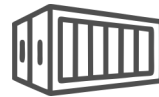
HS-20

4G GPS TRACKER (LTE /GSM/GNSS)

HARES
Secure your world.

KEY FEATURES

- 4G LTE Cat .1 with 2G FallBack
- 6000mAh Large Battery Capacity
- GNSS, LBS Location
- Disassemble Alarm Detection
- LED Light Hidden Design
- Strong Magnetic Adsorption



Container
Tracking



Trailer
Tracking



Luggage
Tracking

INTRODUCTION

Asset GPS tracker HS-20 is self-contained battery powered device and can be easily moved from vehicle to vehicle, Integrate a variety of sensors to realize position, motion, vibration and light monitoring, Placed in a package, or even used to monitor and track valuable assets. GPS tracker HS-20 is a professional tracking device for transport & logistics industry, refrigerated cargo industry, container tracking, construction, valuable assets and criminal investigation.



4G
Network



LOGO
Customization



Disassemble Alarm
Detection



Vibration
Alarm



Strong
Magnetic



1 Year Free
Platform(IOPGPS)



CE, FCC, RoHS,
ANATEL



Driver ID
Behavior Monitoring

Golden Star Network Co.

Website: gsnco.om

Address: Way2114, building 704, near Oman oil petrol station, Madinat Qaboos, Muscat, Oman

SPECIFICATIONS

GENERAL

| | |
|------------------------------|-------------------|
| Network | 4G Cat.1 + 2G GSM |
| Shell Material | ABS+PC (V0) |
| Voltage input | 5V2A |
| Water & Dust Resistant Level | IPX5 |

WIRELESS

| | |
|--------------------|---------------------------------------------------------------------------------------------|
| Data Support | SMS, TCP |
| EU (Neoway N58-EA) | LTE-FDD: B1/B3/B5/B7/B8/B20/B28 LTE-TDD: B38/B40/B41 GSM: 900/1800 MHz |
| SA (Neoway N58-LA) | LTE-FDD: B1/B2/B3/B4/B5/B7/B8/B28/B66 LTE-TDD: B38/B40/B41 GSM: 850/900/1800 /1900MHz |

CONNECTOR

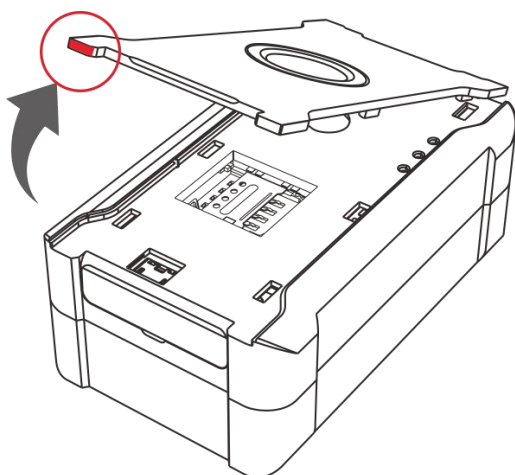
| | |
|-------------|-----------------------------------|
| USB | 1 Micro USB (configuration/debug) |
| GPS Antenna | Internal |
| LTE Antenna | Internal (Bracket Antenna) |
| SIM Card | Micro SIM |

ON BOARD

| | |
|------------------|--------------------------------------------|
| LED | x3 Power LED GNSS LED Network LED |
| Memory | 1000 Records |
| 3D Accelerometer | On Board |

SIZE AND WEIGHT

| | |
|------------|------------|
| Dimensions | 80x50x32mm |
| Weight | 170g |



POSITIONING

| | |
|------------------------|----------------------------|
| Location Technology | GPS/Glonass/Galileo/BeiDou |
| Chip Model | AT6558R |
| Positioning Antenna | Built-in antenna |
| Antenna Specifications | 25x25x2mm |
| Concurrent GNSS | GPS+BDS (Default) |
| Update Rate | 1 Hz |
| Channels | 20 |
| Tracking Sensitivity | -165dBm |
| Cold Start Open Sky | 38 s |
| Hot Start Time | 2 s |
| Assisted GPS | Supported |

ELECTRICAL

| | |
|---------------------------|---------------------------------------------------------------------------|
| Hardware Protection | Overcharge protection Overvoltage protection Overcurrent protection |
| Power Average Consumption | 3.6 mA(Sleep) 54 mA (Active) |
| Built-in Battery | 6000mAh 3.7V (Rechargeable Battery) |
| Working Temperature | -25°C - 80°C |
| Storage Temperature | -30°C - 80°C |
| Working Humidity | 10%-85% RH non-condensing |

Optional

| | |
|-----------------------|----------|
| Temperature Detection | Optional |
| LOGO Customization | Optional |

